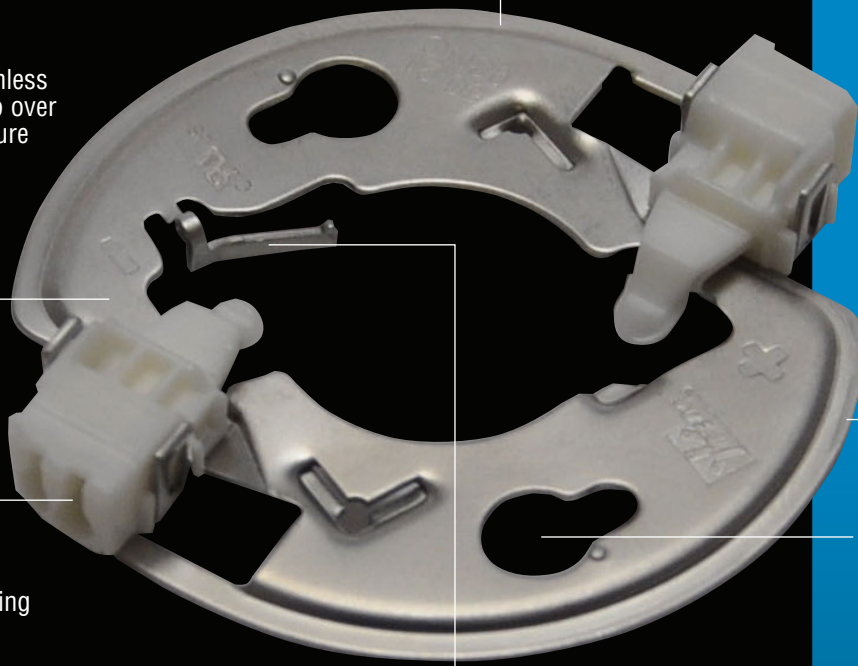


# Chip-Lok® LED COB Array Holder



Flange provides strength & thermal path to allow chip to run cooler

Hardened stainless prevents creep over time/temperature



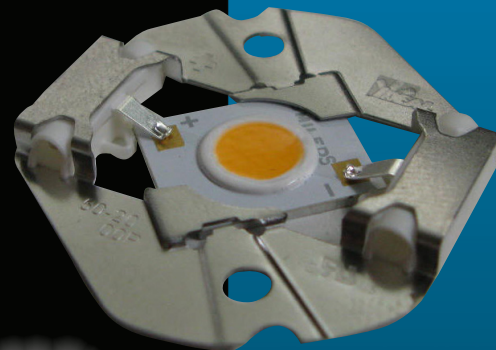
Daisy chaining capable

Keyways allow easier assembly

Designed to meet common industry standards

- *Designed for LUXEON CoB*
- *Daisy chain up to 250 volts and 4 amps*
- *Metal acts as heatsink and allows chip to run cooler*
- *Hardened SS holder provides great thermal force over time/temperature*
- *Keyway and spring leg ease assembly*
- *Designed to meet common industry standards*
- *Holders compatible with commercially available reflectors*

Spring holds PCB in position to ease assembly



Contact IDEAL to learn about LED technology developments for other lighting applications.

**Chip-Lok® Jr.**  
**NOW AVAILABLE**

US Patent Nos. 9,146,027 & 9,249,955

Lumileds® is a registered trademark of Lumileds Holding B.V.





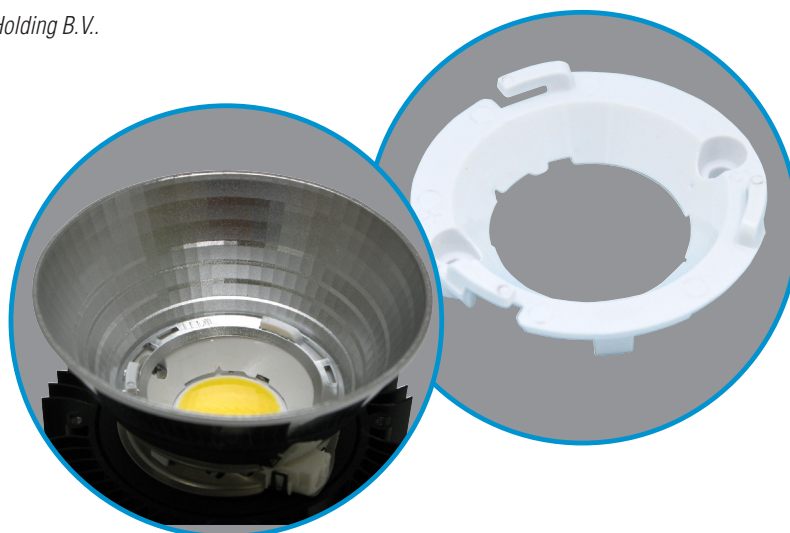
# Chip-Lok® LED COB Array Holder

Ordering Information				
IDEAL Catalog No.	50-2000P	50-2100NC	50-2100SH	50-2204CT
Model No.	Chip-Lok® Jr. 50-20	Chip-Lok® 50-21	Chip-Lok® 50-21	Chip-Lok® 50-22
Lumileds Product Name	LUXEON CoB 1202s, 105, 107, 109	LUXEON CoB 1202, 1203	LUXEON CoB 1204, 1205, 1208	LUXEON CoB 1211, 1216
Specifications				
Electrical				
UL/CSA Voltage	Class 2		250V	
UL/CSA Current	3A		4A	
ENEC Voltage	SELV		150V	
ENEC Current	2A		2A	
Mechanical				
Diameter	35mm		50mm	
Max. Height	3.5mm		7.2mm	
Screw Spacing	25mm		35mm	
Temperature	T-110C			
Reflector Adaptors				
50-2100AN LEDIL® Angela		•	•	•
50-2100LN LEDIL® Lena		•	•	•
50-2100MR LEDIL® Mirella-PF		•		
50-2000MR LEDIL® Mirella	•			
Standards and Specifications				
	UL 8754	UL 496/ENEC		
	RoHS and REACH Compliant			
	Patents Pending Globally			
Wire Range				
Solid	18 - 24 AWG; 0,25-1,00mm <sup>2</sup>			
Stranded	20-22 AWG; 0,50-0,75mm <sup>2</sup>	18 - 22 AWG; 0,50-1,00mm <sup>2</sup>		
Tin Bonded	20-24 AWG; 0,25-0,75mm <sup>2</sup>	18 - 24 AWG; 0,25-1,00mm <sup>2</sup>		

LEDIL® is a registered trademark of Ledil Oy Corporation Finland.  
Lumileds® and LUXEON® are registered trademarks of Lumileds Holding B.V.

Contact us for solutions to attach reflectors from leading manufacturers.

50-2100AN Adaptor shown with LEDIL® Angelina.



Visit [www.idealind.com](http://www.idealind.com) to see all our Lighting-OEM Products!

U.S.: [oem@idealindustries.com](mailto:oem@idealindustries.com) • 1-800-324-9571  
 Brazil: [ideal\\_brazil@idealindustries.com](mailto:ideal_brazil@idealindustries.com) • +55-11-4314-9930  
 Canada: [ideal\\_canada@idealindustries.com](mailto:ideal_canada@idealindustries.com) • +1-(800) 824-3325  
 China: [ideal\\_china@idealindustries.com](mailto:ideal_china@idealindustries.com) • +86-21-31263188, Ext. 209  
 German: [germanysales@idealind.com](mailto:germanysales@idealind.com) • +49-89-99686-0  
 India: [oem@idealindustries.com](mailto:oem@idealindustries.com) • +91 0124 4495106  
 Mexico: [oem@idealindustries.com](mailto:oem@idealindustries.com) • +1-815-899-7796  
 UK: [enquiries@idealind.com](mailto:enquiries@idealind.com) • +44 (0)1925 444 446